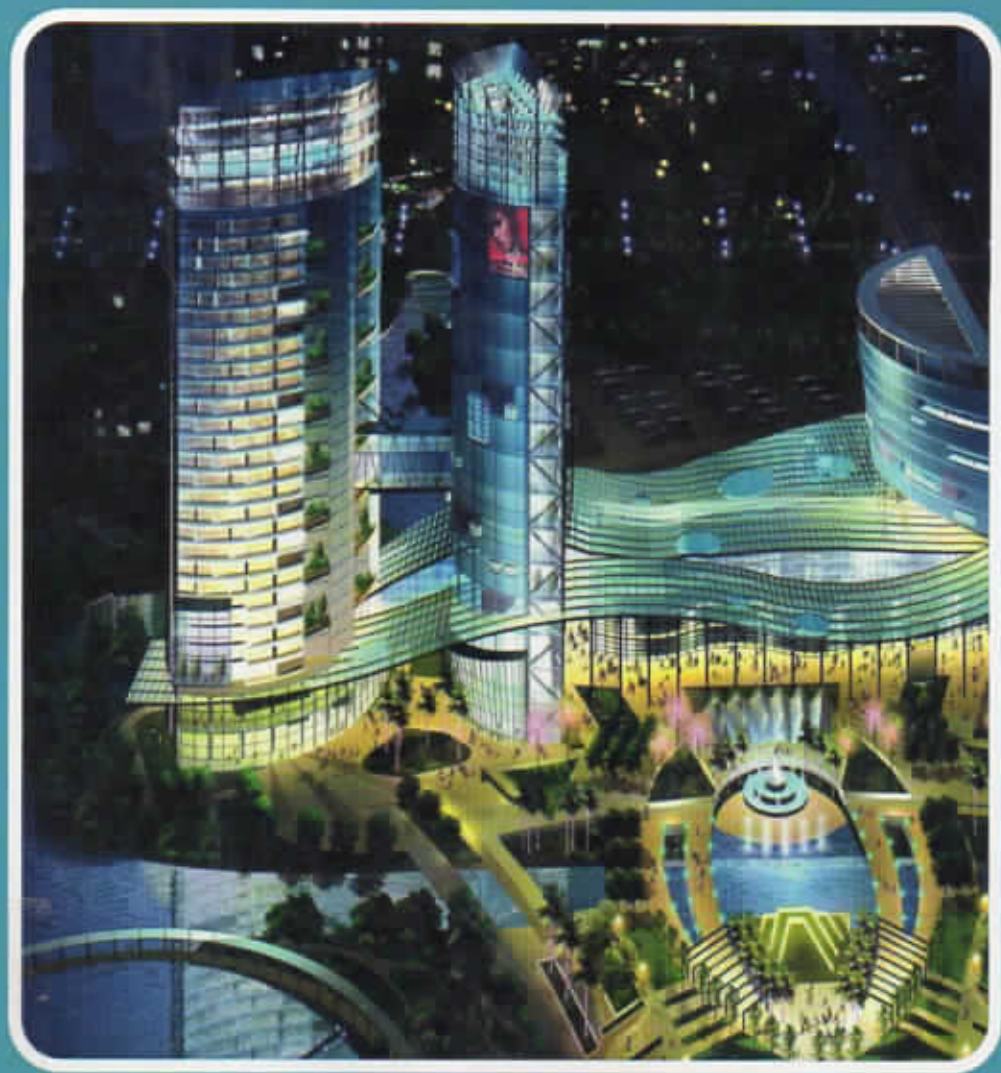


Basics of Drawing and Graphics



Printable Workbook included in the DVD



3G eLEARNING

604.24
B91
2019
+



BASICS OF DRAWING AND GRAPHICS



3G eLEARNING

TABLE OF CONTENTS

1. Plane Curves and Free Hand Sketching	
1.1 Basic Geometrical Constructions 4	
1.2 Curves used in Engineering Practices 9	
1.2.1 Conics Section 9	
1.2.2 Cycloid 20	
1.3 Scales 25	
1.3.1 Representing Scales 25	
1.3.2 Types of Scales and their constructions 26	
1.4 Visualization Principles 30	
1.4.1 The Design of Visualizations 32	
2. Projection of Points, Lines and Plane Surfaces	
2.1 Orthographic Projection 44	
2.1.1 Multiview Orthographic Projection 47	
2.1.2 First-Angle Projection 48	
2.1.3 Third-Angle Projection 49	
2.2 Projection of Points 51	
2.2.1 General Procedure to Draw Projection of Points 53	
2.3 Projection of Straight Lines 53	
2.4 Projection of Plane Surfaces 56	
2.4.1 Types of Planes 56	
3. Projection of Solids	
3.1 Projections of Solids in Simple Positions 64	
3.1.1 Prisms 65	
3.1.2 Pyramids 71	
3.2 Soil Cylinder 75	
3.2.1 Cone 77	
4. Projection of Sectioned Solids and Development of Surfaces	
4.1 Section of Solids 84	
4.1.1 Types of sectional views of solids 84	
4.2 Development of surfaces 85	
4.2.1 Importance of Development 85	
4.2.2 Methods of Development 85	
4.3 Definition of a Development 94	
4.3.1 Relation of the Surfaces in a Pattern 95	
4.3.2 General Classification 96	
4.3.3 Solids that may be Accurately Developed 97	
4.3.4 Solids Developed on Radial Lines 98	
4.3.5 How the Division of solids is Accomplished 99	
4.3.6 Importance of certain Views 99	
4.3.7 The Stretch-out 100	
4.3.8 Position of the Development 101	
4.3.9 Development of the Cube 101	
4.3.10 General Rules for Obtaining Parallel Developments 102	
4.3.11 Drawing Plate, Title-Developments 103	
4.3.12 To develop the curved surface of a cylinder 103	
4.4 Prisms, Pyramids, Cylinders, and Cones 104	
4.4.1 Prisms 104	

4.4.2	Pyramid.....	106	6.3.5	To Find Centre of a Given Arc.....	164
4.4.3	Cylinders.....	109	6.3.6	Construct Equilateral Δ s.....	164
4.4.4	Sections of cones.....	110	6.3.7	Construct a Square.....	165
5.	Isometric and Perspective Projections		6.3.8	Construct a Pentagon.....	165
5.1	Isometric Projection.....	117	6.3.9	Data required for Construction of Scale.....	166
5.2	Isometric Scale.....	123	6.4	Geometrical Construction	167
5.2.1	Steps to Draw the Isometric Projection	128	7.	Auxiliary Views	
5.3	Drawing of Isometric Projection.....	128	7.1	Concepts of Auxiliary View.....	175
5.4	Combination of Two Solids.....	134	7.1.1	Primary Auxiliary Views.....	176
5.5	Perspective Projections.....	135	7.1.2	Frontal Auxiliary Views (fold line Method).....	177
5.5.1	Perspective Projection Terminology.....	136	7.1.3	Horizontal Auxiliary Views (Fold Line Method).....	179
5.5.2	Perspective Projection Classifications.....	136	7.1.4	Profit Auxiliary Views (Fold Line Methods).....	179
5.5.3	Perspective Projection Variables Selection.....	137	7.1.5	Secondary Auxiliary Views Using Folds Line.....	180
6.	Engineering Curves		7.1.6	Adjacent Views	181
6.1	Standards of Engineering drawings	141	7.2	Auxiliary Views Using the Reference Plane Methods	181
6.1.1	Paper Sizes and Folding.....	142	7.2.1	Drawing an Auxiliary View	182
6.1.2	Lines and Lettering.....	144	7.2.2	Secondary Auxiliary Views.....	183
6.1.3	Title Blocks and Parts Lists.....	147	7.3	Auxiliary Views Conventions	185
6.2	Preparing Engineering Drawings.....	149	7.3.1	Partial Auxiliary Views.....	186
6.2.1	Sketches.....	150	7.4	Broken and Half Auxiliary Views.....	186
6.2.2	Hand Drafts.....	150	7.4.1	Auxiliary Views of Curved Features.....	187
6.2.3	Detail (Working) Drawings.....	151	7.4.2	Auxiliary Sections.....	187
6.3	Scales.....	151	7.4.3	Auxiliary Views and Dimensions.....	188
6.3.1	Types of Scales.....	152	7.5	CAD Generated Auxiliary Views	188
6.3.2	Geometrical Construction.....	155			
6.3.3	Centre of Gravity.....	161			
6.3.4	To Trisect an Angle.....	163			